



design | 3D | materials lists

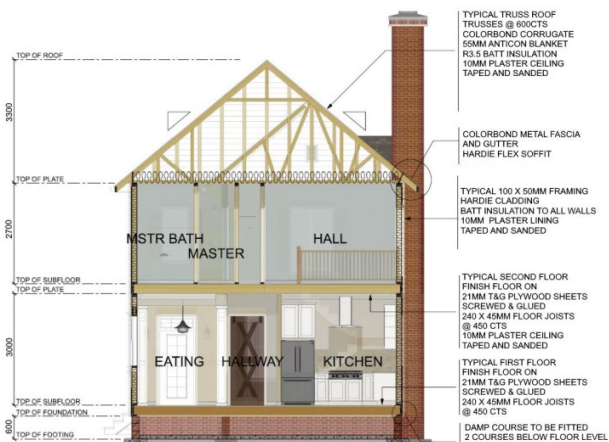


Why SoftPlan?

SoftPlan home design software gives you everything you need to create and build or sell your designs.

SoftPlan delivers the most complete CAD package available by offering:

- The shortest learning curve in the industry
- Drawing terms and objects familiar to building professionals
- Logical interface and order of operations
- Hundreds of commands for quick and easy design & customisation
- BIM automation of construction documents, 3D renderings, materials lists & cost estimate reports
- Easy-to-reach customer support



Architects

- Create impeccable construction docs
- Create high-quality 3D renderings
- Create animated walkthrough tours
- Import/export to AutoCAD®
- Import content from SketchUp®
- Automatic REScheck™ energy reports
- BIM and parametric capability

Builders

- Become a one-stop, design-build firm
- Save money and time on design
- Cut down on quoting time
- Quote jobs more accurately
- Make more and larger sales using high-quality 3D presentations
- Create detailed framing plans for your crew

Designers

- Create comprehensive house plans using advanced, easy-to-use tools
- Increase productivity and accuracy through automation
- Customise plans with thousands of symbols and textures
- Import “flat” AutoCAD® drawings and convert into 3D “BIM” models
- Export to AutoCAD®, MiTek®, Lumion® & SketchUp®
- Quickly generate 3D views

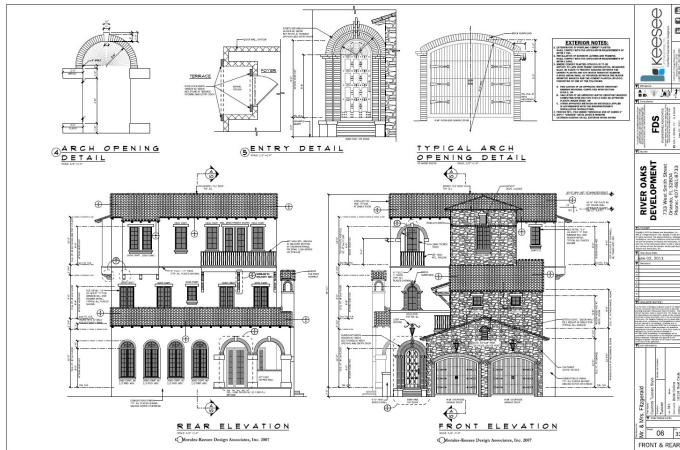
Renovators

- Create custom kitchens, bathrooms, decks, screen porches, and other additions using simple drawing tools and unique symbols and textures
- Impress clients with stunning 3D presentations

Timber Yards

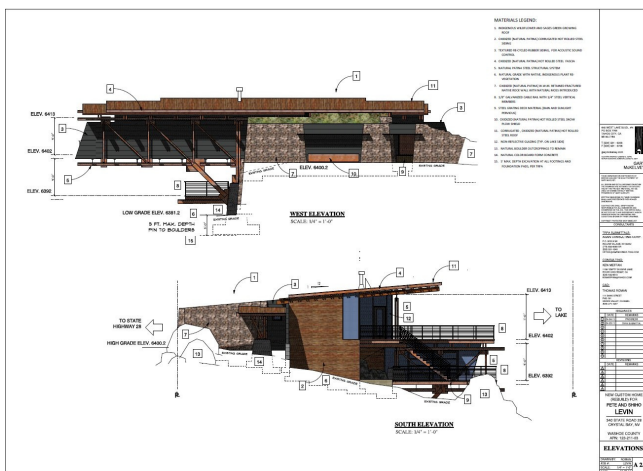
- Create drawings quickly
- Optimise material calculations

Construction Documents



When you design a floor plan, SoftPlan models what you draw and automatically creates elevations, sections, framing diagrams, cost estimate reports and the materials list.

Whether you want to generate instant sections and elevations, or benefit from automatic framing, opening and electrical schedules, SoftPlan allows you to create construction documents with absolute accuracy in a fraction of the time you could do so by hand.



Drawing Types:

- Floor Plans
- Elevations
- Cross Sections
- Interior Elevations
- Roof Plans
- Roof Framing
- Wall Framing
- Floor Framing
- Electrical Plans
- Site Plans
- Details

Automation

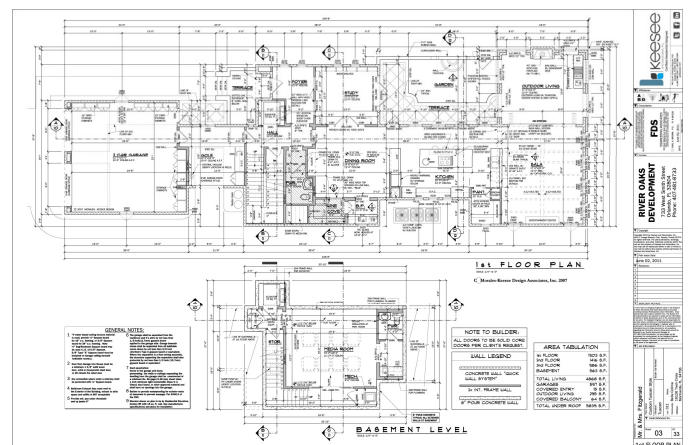
As you draw, SoftPlan's automation enhances productivity and ensures that nothing is left out of the plan.

Customisation

While automation saves time, SoftPlan provides extensive customisation tools to make any detailed modification you require.

Integration

SoftPlan's integration capabilities allow all drawings to be imported and exported via AutoCAD's DWG format.



Keese and Associates, Inc.

3D Renderings



Sell Your Design

- stylised renderings
- immersive interiors and exteriors
- stunning walkthrough animations
- export to Lumion®

Create High-Quality Renderings

- advanced shadows
- reflections
- sun studies
- indirect lighting
- photorealistic graphics

Faster Results

- automatic model generation
- time-saving tools
- instant design feedback

"More professional, more realistic presentations..."

"We wanted to make more professional, more realistic presentations, so we began investigating the wide variety of CAD software programs for renovators and builders.

We chose SoftPlan because it looked like a system that we could integrate into our daily activities without months of training.

We were right; within days, we were able to print floor plans and elevations of room additions."

Gregory Geisler — R.A. Kalfas Home Improvement, Inc.



SoftPlan - The Complete Package

SoftList - Materials Lists

SoftList is a material estimator that allows you to automatically generate real-time materials lists, cost estimate reports, and more using information stored in your SoftPlan floor plans.

Automatically create:

- **Materials Lists** complete with markup values, labor costs, and customisable units and quantities
- **Cutlist Reports** to ensure minimal timber waste
- **Cost Estimate Reports** showing pricing, labour rates, markups, and more
- **Detailed SoftList Reports** for your own use, listing items such as markup and labour, or creating simplified reports for clients



Project Name: Granny Flat
Owner: Mr & Mrs Smith
Site Address: . . .

Report: Summary - Short Format

Material	Description	Qty	Units	Cost	Total
Concrete		150	3 m	2.00	6.00
Plasterboard (Wall)			207 m ²	0.18	37.26
Plasterboard (Ceiling)		10	90 m ²	0.24	21.60
Plasterboard Screws (100)			14 ctn	42.90	600.60
Plasterboard Tape (75mts)			5 roll	3.90	19.95
Plaster Stud Adhesive			11 Kg	3.30	36.30
Jointing Compound 20Kg			4 Bags	3.30	13.20
External Corner			3 each	0.18	0.54
Subtotal					829.45
FLOORING					
Material	Description	Qty	Units	Cost	Total
Carpet			23 m ²	19.50	448.50
Hardwood Floor (70mm)			17 m	5.75	97.75
Carpet Underlay			23 m ²	2.95	67.85
Subtotal					614.10
TRIM CARPENTRY					
Material	Description	Qty	Units	Cost	Total
Architrave - Door Trim		90	100	3.90	367.20
Architrave - Window Trim		90	32 m	3.50	112.00
Skirting		90 x 12	56 m	1.20	67.20
Rod for Shelf		2400	2 each	4.92	9.84
Rod for Shelf		2400	1 each	3.94	3.94
Shelf edge support		50 x 25	14 m	0.85	11.90
Shaving - 450 x 2400mm		450 x 2400	3 each	15.00	45.00
Door Jamb & Stop		2 040 x 720	3 set	40.00	120.00
Door Jamb & Stop		2 040 x 820	2 set	40.00	80.00
Cavity Door Jamb & Stop		2 040 x 360	3 set	45.00	135.00
Subtotal					651.78
CERAMIC TILE					
Material	Description	Qty	Units	Cost	Total
Ceramic Floor			34 m ²	2.45	83.30
Subtotal					83.30
CABINETS & APPLIANCES					
KITCHEN CABINETS					
Material	Description	Qty	Units	Cost	Total
B800F	870 x 300 x 575	1	each	34.92	34.92
B800F	870 x 800 x 575	1	each	104.76	104.76
B8C000F	870 x 900 x 575	1	each	78.58	78.58
B400F	870 x 400 x 575	2	each	52.38	104.76
B800F	870 x 800 x 575	1	each	-	-
SD450	870 x 450 x 575	1	each	66.08	66.08
B20FILL	870 x 20 x 575	1	each	-	-
T4902 250000F	2 250 x 450 x 600	1	each	182.00	182.00
T25FILL 250800	2 250 x 20 x 600	2	each	-	-
W800640350F	640 x 600 x 350	1	each	78.58	78.58
W20FILL840350	640 x 20 x 350	2	each	-	-
W430640350F	640 x 430 x 350	1	each	52.38	52.38
W800640350F	640 x 850 x 350	2	each	104.76	209.52

Material Setup: Group Wall

Material Name: Retaining Wall Blocks 200

Include: Yes Units: each Part:

Wall Part: Wall Load: Both Length: Center Only Calculate Material if Wall: Has Footing Is Exterior Is Interior

Calculate Material for Walls Containing Regions of... Has Profile Material Profile: None

Selection Limits: height: Greater 170

Calculation Method: List Format Lumber Format Custom Formula Accumulate

Quantity = 1 Calculate Quantity

Calculate Dimension: Description

Value	Unit
length	?
400	millimeters
height	?
400	millimeters
thickness	?
	millimeters

Coverage: ? Include Wall ID

Number of Decimal Places: 0

Buttons: Prev, Next, Print, View Formula, Notes, Accounting, OK, Cancel

Seamless Integration

Import and export with outside programs such as Lumion, SketchUp, Google Maps, AutoCAD, REScheck, QuickBooks, and more.



"SoftPlan continues to work great for us."

"SoftPlan continues to work great for us. Our estimates are as tight as they can get. Well under 1/2 of a percent variance from budget."

Dave Tucker — Sedgewick Homes

SoftPlan+ Cloud Drive and Services



Included with SoftPlan is the SoftPlan+ cloud drive and services. These additional benefits will greatly enhance your SoftPlan experience.

free upgrades

SoftPlan subscribers always have access to the latest version SoftPlan.

online training content

access to the entire training library online

enhanced technical support

integrated support tickets

iOS review

2D & 3D designs on iPad, iPhone & Android

PDF

import & export PDF files

reView

import & export SoftPlan reView files

panorama views

a fully immersive 3D experience on PC, iPad, iPhone, or Android devices

360° photo on Facebook and web pages

360° photos are interactive images that can be panned & explored by anyone viewing them

Google

import 3D terrain and satellite images directly from Google

SketchUp

import/export integration with SketchUp expands the modeling options at your disposal

web3d

publish 3D models online where clients can tour their future homes using easy-to-use camera controls

premium manufacturer content

enhanced libraries including additional manufacturers

Not all manufacturers libraries are available in Australia



Scan the QR code to take a tour of this historic renovation using SoftPlan's web3d technology on your computer, tablet, or phone.



Product names, logos, brands, and other trademarks referred to within SoftPlan Systems, Inc.'s products, services, and within this brochure are the property of their respective trademark holders.

SoftPlan Subscription

With a monthly subscription fee of just \$ 275, you will receive the complete SoftPlan package including the SoftList material estimator, the SoftPlan+ cloud services, and more.

Your subscription also guarantees that you will always have the newest version of SoftPlan which will allow you to stay up to date with everything SoftPlan has to offer.

monthly subscription

\$275

See SoftPlan in Action & Try It for Yourself

If you're interested in SoftPlan, please visit www.cadbuild.com.au where you can:

- Watch an in-depth video tour of what It is like to design with SoftPlan
- Request an online demonstration with one of our knowledgeable staff members.
- Try SoftPlan for yourself with a free trial download

If you have any questions or would like to arrange a demonstration, our sales team is ready to help.



no contract required

failure to pay the monthly subscription fee terminates access to the SoftPlan software and the SoftPlan+ cloud services

subscriptions must be paid by credit card

payments are charged one month ahead

Cadbuild Aust Pty Ltd
285 Dairy Rd
The Oaks, NSW
2570



SOFTPLAN
ARCHITECTURAL DESIGN SOFTWARE

(02) 4657 1874
sales@cadbuild.com.au
www.cadbuild.com.au