



technologically
advanced
residential
design
software

2016

SOFTPLAN
ARCHITECTURAL DESIGN SOFTWARE



BONUS – For current version users.

What is SoftPlan+ ?

SoftPlan+ is a Cloud based facility that enriches the design process by providing the user with a suite of services and up-to-date knowledge of everything SoftPlan has to offer.

Who can use SoftPlan+ ?

Current up to date version users will have access to SoftPlan+ . Ie, as long as you are using the current version you will have access to the SoftPlan+ services.

***SoftPlan+ is an additional service added to SoftPlan, not a copy of SoftPlan.**

***This information is for Australian and New Zealand users only.**

What is in SoftPlan+ ?

SoftPlan+ Users have access to the following:

Cloud Sharing

SoftPlan+ saves the most recent copies of your projects to the SoftPlan+ cloud drive. Access your drawings from multiple locations so you can continue working on your project from a different system. Eg, Access your drawings from work or home. Give access to other SoftPlan users in your organization.

Customer Interaction

SoftPlan+ provides an entirely new level of customer interaction that facilitates communication so that the customer is always up to date. This efficient system of interaction gives the customer the ability to view your designs in 2D plans and 3D models, from a PC or an iOS device of their choice, and to supply input in a collaborative process unique to SoftPlan.

reView

SoftPlan+ Enhances reView functions.

All reView functionality is available through SoftPlan+ including the authoring of reView & PDF files.

Panoramic Views

Automatically generate panoramic views from predefined points to experience the model in fully immersive 3D on PC, iPhone, or most impressively, iPad.





iOS iPad and iPhone

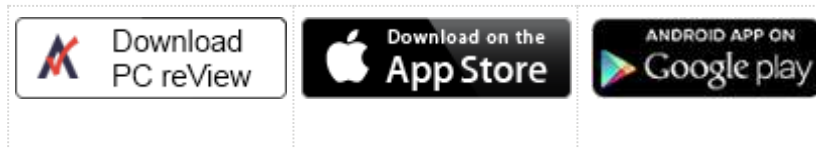
SoftPlan+ allows Apple iOS support for the iPad and iPhone so users can access their work from anywhere. Mark up drawings, add notes, and take a virtual tour of a house in full, panoramic 3D, all from the convenience of your iOS device.

Android

SoftPlan+ allows android users to access their work from anywhere. Mark up drawings, add notes, and take a virtual tour of a house in full, panoramic 3D, all from the convenience of your android device.

Free Viewer

The free reView viewer allows anyone (with permission) to see your drawings and allows complete navigation of the 3D model, while security settings allow you to maintain control of your work



Premium Content

SoftPlan+ users have access to additional content that is stored on the SoftPlan+ cloud server and can be updated and augmented at any time.

SoftPlan+ Content Textures

SoftPlan+ Content Electrical Symbols

SoftPlan+ Content Symbols

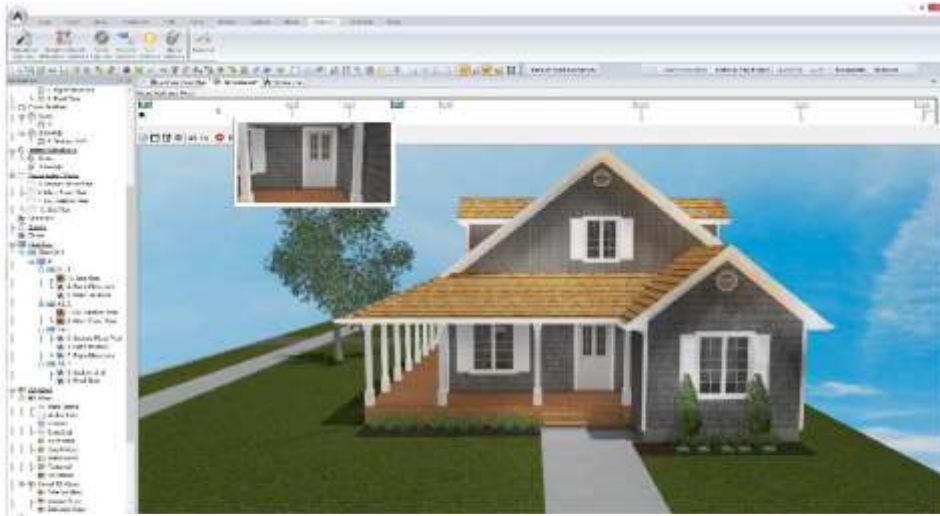
SoftPlan+ Content Manufacturer Symbols

SoftPlan+ Manufacturer Listing

Training Material

The latest training material will be made available as it is released. Training material will be accessible via the SoftPlan start page.

SoftPlan 2016 Major Features: Walkthrough Animations



Walkthrough Animations

With this release, SoftPlan introduces a new feature that allows you to create custom walkthrough animations by capturing camera movements you make in the 3D model or in one of SoftPlan's various 3D views.

These walkthroughs are easy to create, easy to modify and easy to distribute.

Create compelling videos for your clients or prospective clients.

SoftPlan automatically adjusts the views so you walk up or down stairs.

Each recorded movement becomes a frame on the timeline, building an animation that can be played back and saved. Add, remove, or modify frames using the timeline's editing tools and output settings to create detailed walkthrough presentations.



Automatic Presentation Views

With a click of the mouse, you can quickly generate Presentation Views from floor plans found in the Model list. Presentation Views provide a top-down view of the drawing in 3D and can be generated in any of SoftPlan's 3D modes. Similar to other 3D views in SoftPlan, Presentation Views can be saved as SoftPlan drawings and detailed with paint and construction notes. Presentation Views can also be added to Plan Set Pages and printed along with your other floor plans, 3D images, and construction drawings.

SoftPlan 2016 Major Features: 3D

HDR Tone Mapping

When the Tonal Mapping option is checked, SoftPlan uses an HDR (High Dynamic Range) to perform more detailed lighting calculations and then applies Tonal Mapping techniques to convert that image to one appropriate for display on computer monitors and printing. This causes images that would normally appear washed out to have more pleasing lighting variations.



Gamma Correction

Gamma correction is a technique used to correct the way images display on monitors. When applied, it yields a brighter looking image.



Indirect Lighting

Indirect Lighting is light that reflects off surfaces onto surrounding objects to produce a more realistic image.

Direct Contribution and Indirect Contribution sliders allow you to choose how much direct and indirect light you want to blend into the final image.

Touch Support

This release introduces SoftPlan Touch support. With a touchscreen monitor or Windows tablet, SoftPlan's drawing actions are completely available at your fingertips.

Using touchscreen movements such as pan, zoom, and drag and drop, SoftPlan's touch capabilities allow you to create content from the convenience of your office or on the go. SoftPlan's intuitive touch interface facilitates quick sketching by automatically panning where your finger goes and using drag and drop item placement.



SoftPlan 2016 Major Features: AutoCAD files to SoftPlan

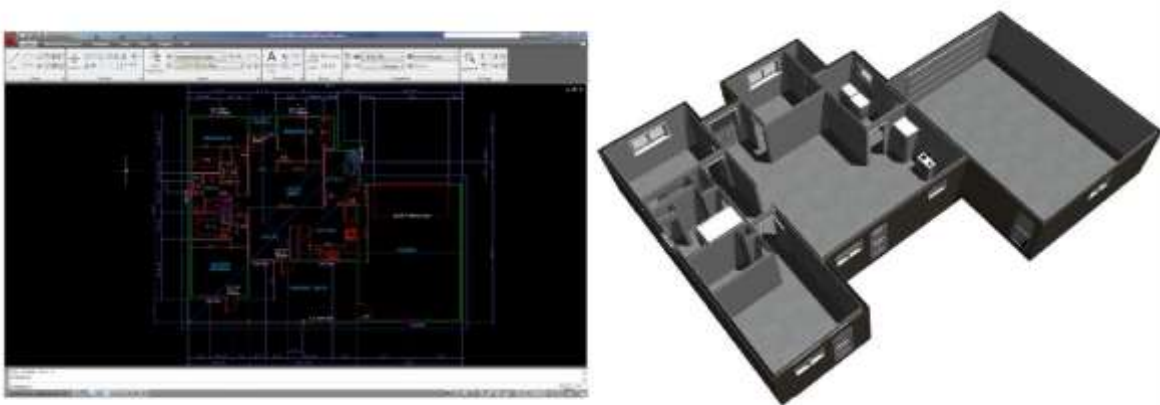
AutoCAD to SoftPlan Conversion Wizard

The AutoCAD to SoftPlan Conversion Wizard offers an unprecedented level of convenience for importing DWG and DXF file formats into SoftPlan.

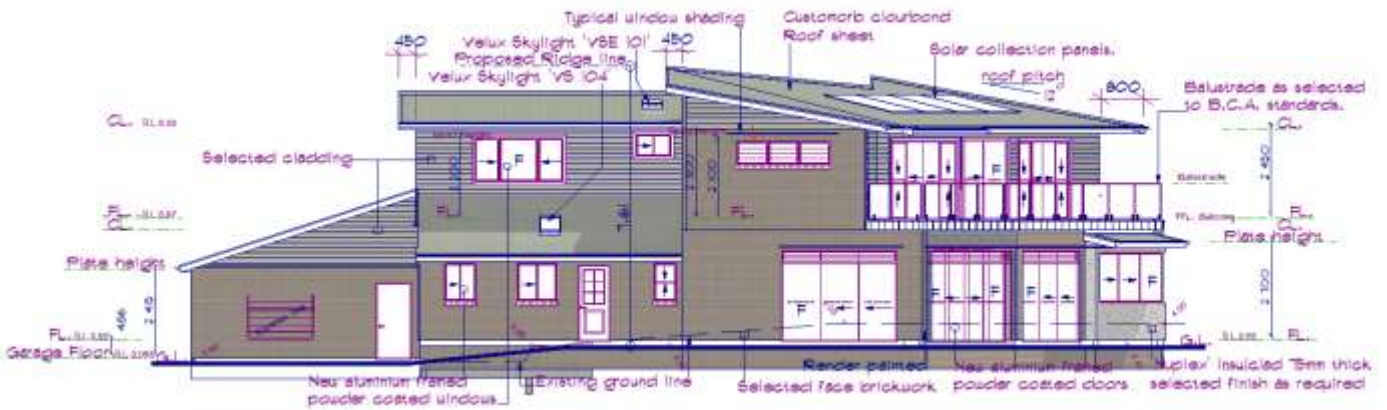
Import a single drawing, multiple drawings, or an entire project by following a series of easy steps to convert simple lines into walls and other SoftPlan items.

Once you have selected a file to convert, SoftPlan creates a preview tab that automatically updates as you work. You can then choose which AutoCAD layers to import and how to import them, change wall lines into the wall types you want to use, cleanup wall generation issues, and convert imported symbols into SoftPlan symbols and openings.

In minutes, take a “flat” two-dimensional AutoCAD drawing and convert it into a SoftPlan three-dimensional “BIM” drawing complete with walls, doors, windows and symbols.



SoftPlan 2016 Major Features: Elevations and Cross Sections



Auto Paint Elevations, Interior Elevations & Cross Sections

Elevations can be automatically painted with textures used on the 3D model. The textures used on the 3D model can also be added to Interior Elevations and Cross Sections.

This one-click process gives your drawings the finished, professional look of colored construction documents and prevents you from taking time to paint individual sections.

Texture opacity can be edited to show more or less of the paint pattern. Changes made to the 3D model can be easily updated on elevation drawings and vice versa.

SoftPlan’s model paint will put your color printer to use producing better looking, easier-to-understand drawings in less time.

SoftPlan 2016 Major Features: Elevations and Cross Sections



Automatic Shadows

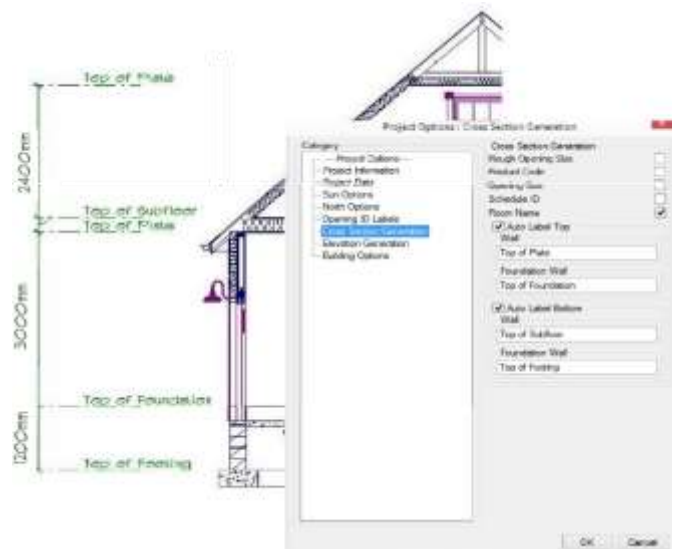
The new elevation tools can also be used to isolate the shadows from the 3D model and add them to an otherwise vector drawing. This feature will be particularly useful for those of you that are required to supply sun study drawings as part of the drawing set.

Auto Label Tops and Bottoms of Walls

To reduce the time it takes to create finished elevations and sections, SoftPlan will automatically label the elevation markers that indicate the bottoms and tops of walls on the various floors of a house.

The labels that are placed (top of wall, top of plate, top of footing...) are user configurable for each floor allowing drawings to automatically label using your nomenclature.

The extension markers are sized so that a dimension line can be easily added.

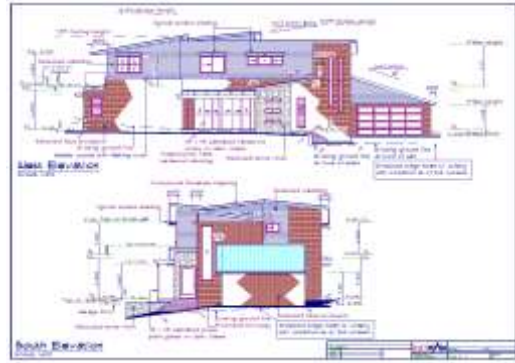


Dentil Molding

New capabilities added to the profile tools in SoftPlan 2016 enable you to create dentil type molding that greatly enhances the realism of the 3D model.

Dentil molds can be created for such interior profiles as crown molding, chair rails and crowns on the tops of cabinet runs.

SoftPlan 2016 Major Features: Plan Sets



Plan Sets

Plan Sets were introduced in SoftPlan 2014 as a way to provide a convenient, automated method for arranging and organizing one or more drawings or image pages for printing. SoftPlan 2016 builds significantly onto this feature making Plan Sets an even more powerful time-saving tool.

Plan Set Templates

Plan Sets that you create can be saved as templates for future use. Plan Set Template files save the pages you created for the Plan Set and other attributes you specified such as the page size, border, watermark, and margins.

The next time you wish to use a similar arrangement of drawings and pages, simply recall the template. SoftPlan will automatically create all of the pages and place the appropriate drawings for the new project on the sample page used in the original project.

Quickly swap out template drawings for current project drawings to expedite the printing process.

Auto Label

Labels showing Drawing Name and Scale are automatically added to the Plan Set when a drawing or view is added. These automatic labels can be edited for content, font, and size, and can be relocated and turned on or off.

This feature eliminates the need to add a "MAIN FLOOR PLAN" type note to a drawing ever again.

Print

Individual pages and page ranges can be sent to the printer.

Building Options

Multiple Building Options can be displayed on a single plan set. This makes it easy to display a plan and the options for that plan on the same sheet.

Export

DWG/DXF export added to Plan Set Pages.

Schedules

Revision Schedule and Drawing Schedule (Table of Contents) commands added.

Other Changes:

- 3D Views—Regenerate added to right-click menu
- Erase Drawing or View added to right-click menu
- Font Options added for Drawing Name and Drawing Scale
- Missing drawing notification added
- Print added to the toolbar
- Rename added to right-click menu
- Draw Select added
- Crop View command added to right-click menu
- Export of rotated drawings improved
- Import Image added
- Prefix added to Groups, used in place of the group name when numbering pages

For more information see www.cadbuild.com.au or email sales@cadbuild.com.au

SoftPlan 2016 Detailed Features

3D

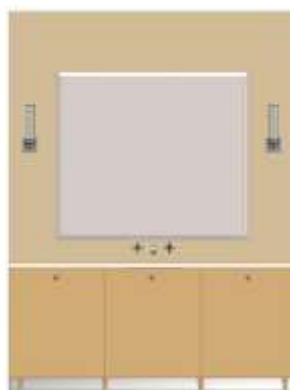
3D Notes added

1979 Chestnut Avenue

- 3D Zoom Speed option control enhanced
- Adjust added to toolbar
- Animation outputs to .WMV format by default
- Anti-Aliasing levels increased
- Banding can be adjusted
- Camera displays the circular path for Camera
- Clay Model 3D mode added
- Collision detection indicators are easier to see
- Draw Profile 3D preview added
- Draw Select added
- Edit Surface dialog enhanced
- Eyeball navigation improved
- File Save Images defaults to .JPG
- Frame Rate added to screen animations as a way to control playback speed
- Go To Room command allows room selection with a double-click
- Separate Joist materials added
- Opacity override option added to Face Options, controls semi-opacity for all surfaces
- Rotate Camera around Focus command added to the 3D View window
- Stairs automatically adjust the Camera and the Focus so when moving in 3D you effectively walk up or down the stairs
- Time Stamp option added to Sun Study
- Texture Load renamed to Load Preconfigured Material
- Texture Scale override added to Face Options
- Turning a material off/on included in Undo/Redo
- Zoom in/out on focus added, hold down right mouse button while moving via wheel or arrow keys

Building Options

- Building Options moved under Project Options
- Comment field added
- Current sort order saved
- Dialog size holds session to session
- Groups added
- Items can be included in multiple Building Options
- Multiple Building Options can be displayed on a single plan set
- No limit on the number of Building Options
- Pasted items are automatically placed on the current Building Option

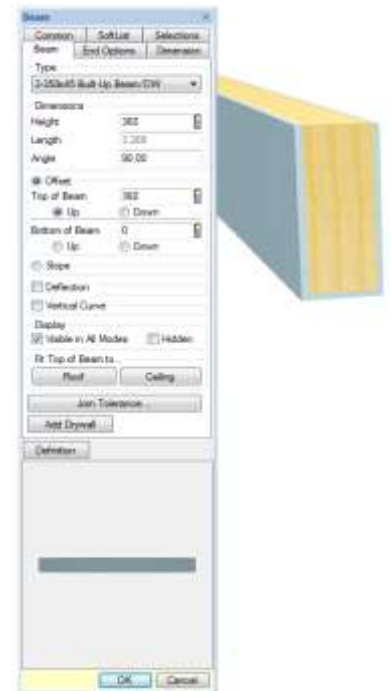


Area

- Area Labels added to Visibility options
- Area Labels can be moved
- Printing of shaded areas improved
- Project Information can automatically calculate the Gross Floor Area
- Round Area to Nearest Unit option added

Beams

- Add Drywall command automatically wraps beam with drywall
- Beams on the drawing are listed at the top of the Draw Beam dialog
- Beam Shading added to Visible Items Options
- Deflection option added allows beam to be curved in plan view
- Dialog width increased to display full name
- Drag & Drop sorting added to Beam Definition
- Draw Beam dialog stays on screen so different Beam Types can be selected without starting the command again
- Dynamic preview added when drawing/adjusting



Cabinets

- 1/4 Round shape added
- Armstrong manufacturer libraries added
- Cabinet height can be adjusted in 3D, Interior Elevation and Section
- Countertops can be set to Print by default
- Hardware can be added to center of the door
- Narrow Cabinets (<=530mm) default to a single door, Wide cabinets (>530mm) to a double door
- Select Cabinet layout logic improved
- Shelves can be added to 1/4 and 1/2 round end cabinets

SoftPlan 2016 Detailed Features

Ceilings

Ceiling Hole edges look improved in 3D
Grid and Tile ceilings extract in 3D
Ceiling will move up and down in 3D and section
Insulation extracts in the model
Radius Bulkheads added

Copy

Distance field added allows items to be precisely copied

Dimensions & Extensions

Arrow Style options added to instance level
Dimension line automatically extends to the first dimensionable item in each direction
Dimension Options toolbar shortcut available
Dimension Text added to Repeat Edit
Edit Dimension requires fewer keystrokes
Dynamic preview added
Instance level Dimension Options added to Walls and Beams
Placement of dimension numbers when using Accumulate improved
Posts have Dimension & Extension options

Distance

Distance command utilizes Perpendicular Snap
Grouped items added
Selection Set items added
Railing Edge and Post added

Decks

Decks can reference framing rather than finish material on a wall
Dynamic preview added when drawing or adjusting Deck Beams
Top of Banding offsets to top of Decking
Joist Hanger option added
Posts snap under beams
Railing Style automatically recalled
Solid Surface (plywood) option added
Steel Framing option added

File

Close All command added
Copy Project command added
Curved Notes export to AutoCAD .DWG files
Icons added to tabs for easier identification
Images added to DWG and DXF exports
Import path is recalled on subsequent imports
Navigation Groups underlined, easier to read
PDF export command updated
Remove from Recently Opened List command added to the right-click of a project
Search Projects command added
Send To automatically creates a Bound Drawings folder for system drawings & details

Floor System

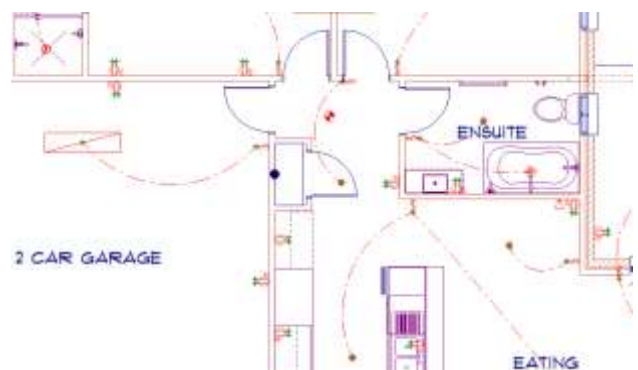
Beams can display shaded
Curved Beams (Plan View) added
Insulation extracts in the model
Joist Hangers can be made visible in Plan & 3D
Joist Spacing for First Joist can be different than other Joist Spacing
Slab insulation thickness can be specified
Slabs with recessed edges display a solid line to indicate the depression
Subfloor area excludes any holes in subfloor

Drop Cord Truss added
Walls above the floor and below the floor system can be displayed



Electrical

Ceiling and Floor Outlets added
Connect Texture renamed to Connect Linestyle
Exit Lights, ceiling and wall added
"Jumps" added to the arcs when Electrical Connections cross
Lights automatically added to a Room
Wall Lights added



SoftPlan 2016 Detailed Features

Interiors

Assign Color option added to System/Drawing options
Interior Labels can be moved
Finishing options increased to 100

Layers

Comment field added
Current sort order saved
Dialog size holds session to session
Pasted items are automatically placed on the current layer
Set Distance Between command can access items in a locked layer

Miscellaneous

Drawing Options: Reset to System Options command added
Elapsed Time counts for entire project
Partial Erase dynamic preview added
Miscellaneous Colors assignment replaced with individual settings for: Truss Set, Table, Truss, Bridging, Profile Post, Profile Wall, Profile Beam, Profile Opening, Rafter, Drawing Item Hole, Ref Point In Symbol, Ceiling, and Profile Zero Line
Rod & Shelf, Center Panel option added

Multi Drawings

Export of rotated drawings improved

Move

Area Labels can be moved
Center in Room command added
Center Between Edges command added
Interior Labels can be moved
Rotate Item indicates the center point of the rotation

Paint

Coronado patterns updated
Opacity option added to Solid Paint
Paint Break located under Draw > Paint
Shade Break located under Draw > Paint
Spline shaped Electrical Connections no longer Paint

Openings

Deflection option added to quickly change a window to an arch top
Draw Door Leaf Solid option added
Garage Door mounting material option added
Marble Sill Type added
Niche Opening Type added
Opening Text Options for Interior vs Exterior are separate
Opening Textures improved on thick walls if interior & exterior trim are different materials
Plantation Shutters (4 section) Opening Treatment added
Solar Heat Gain Coefficient (SHGC) added
Triangle Window added
Trim on multi-material walls improved
U-value option added

Notes

3D Notes added
Beam Schedule command added
Cleanup automatically regenerates a schedule
Copy & Paste between SoftPlan Tables (Schedules) and Excel spreadsheets added
Curved Notes export to AutoCAD .DWG files
Drop Shadow option added to Tables
On screen appearance improved
Pointer Notes default to Detail Note type
Regenerate added to right-click on Schedules
@pg# Information Stamp added
@T#PGS Information Stamp added (total plan set group pages)
@#PGS Information Stamp added (total plan set pages)
Revision Polygon command added
Schedule, drag & drop reordering of columns and rows added
Table Column width can be increased
Takeoff Schedule added
Underline option added to cells in a Table

Posts

Block, Brick & Concrete textures added to plan view
Larger Post Cap Symbols added
Maintain Aspect Ratio option added to Edit
Offset command applies to Posts
Repeat Edit changes both Height and Offset

SoftPlan 2016 Detailed Features

Print

Door Leaf can print solid
Individual Plan Set pages and page ranges can be sent to the printer
Zoom can be used while positioning the Print window

Railings

Posts miter to underside of railing
Post Styles reworked, Flat replaced with No Post, Corner replaced with Center on Rail, Flush replaced with Flush to Rail
Spindles of different styles can alternate on the same railing



reView

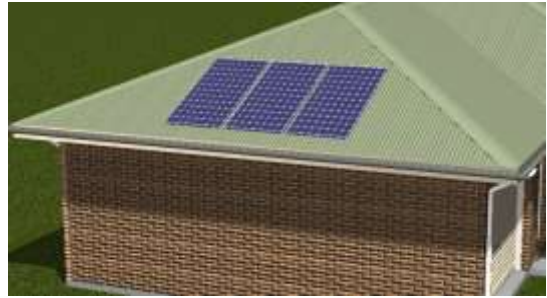
Email option added to PDF Export
Export Options are remembered / recalled for the current session
Password reset option added
Previously used email addresses are stored / recalled for subsequent publication
PDF imports display in exported file

Site

1200mm tall fence definitions added
Fences fit to Site Grades with a negative offset
Fence Gate width option added
Shot Points can be extensioned & dimensioned
Snap point added at Wall/Site Line intersections

Rooms

Draw Room dialog increased in size
Font size override added to individual rooms
Lights automatically added to center of a Room
Room Properties dialog increased in size
Rotate option added, displays label vertically

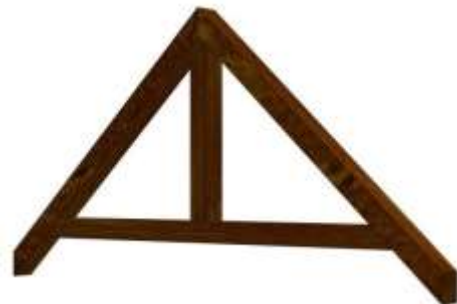


Roof

Auto Roof improved
Color override added to Roof in plan view
Display Roof Outline Dashed added to Visible Items
Dutch Gable Overhang value added
Dynamic preview added
Frieze Board placement improved
Solar Panel command added
Walls can be edited from Roof Mode

Roof Framing

Drop Cord Truss added
Counter Brace can be added to a Truss Set
Gable End Ladder added
King Post Truss added
Outriggers added
Rafter Width option added
Truss Width option added



Shapes & Solids

Arrow Size limit increased to 999
Arrow placement on arcs improved
Center of arcs display as a non-print item
Linstyle selection added to toolbar for Arrows & Spline Arrows
Opacity slider added to solid textured shapes and solids allowing them to display shaded
Polygons can contain both Spline sections and straight sections
Polygons Undo one segment at a time
Snap point added at intersection of two circles

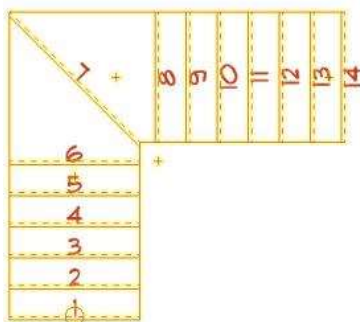
SoftPlan 2016 Detailed Features

SoftList

- Banding Material added
- Ceiling Perimeter variable added
- Gable End Frieze added
- Gable Vent Trim added
- Opening groups aluminium_sill & marble_sill added
- Project Information can be automatically added to the top of a report
- Roof Areas at different pitches will report separate areas
- Site group fences count
- Subfloor Area excludes holes for Stairs
- Stair group deck_finish added
- User Defined Variables can be specified as a list
- Valley Sleepers added
- Variables added for wall inside/outside corners

Stairs

- Closed Stringers display in plan view
- Head Clearance defaults to 2m
- Pen Settings added
- Railings can extend past the Post
- Risers can be automatically numbered in plan view
- Round Nosing possible with plumb riser
- Spindles can extend down lower than the treads
- Stringer Width option added



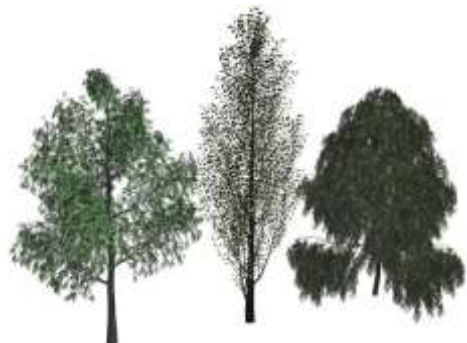
Symbols

- Maintain Aspect Ratio option added to Edit Pen option As Defined added
- Preview is larger and clearer
- Symbol search pane is larger
- Symbol Selection dialog remembers/recalls size
- Symbol previews use menu color as a background for higher contrast
- Symbol Tags added
- Slopes with Reference option added—causes symbols to follow the plane they are sitting on

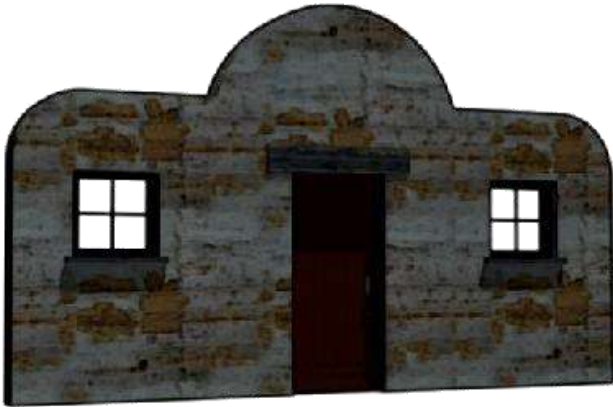


Symbol Libraries

- Air Conditioner-wall hung added
- Opening Jamb details added
- Paint added to plant, tree, shrub & vegetation 2D symbols
- High Surface Count trees added



SoftPlan 2016 Detailed Features



Wall Framing

- A single Wall Panel drawing can be generated for all floors in the house
- Blocking on Double Stud walls improved
- Color assignments added for individual framing components
- Double Window Sill Plate option added
- Framed wall glass wall intersections improved
- Garage Door Bucks option added
- Separate default Styles added for bearing and non-bearing walls
- Shear Panels added
- "U" corner frame style added

Type Erase

- Drawings in Model option added, removes items from all floors in the model
- Revision Clouds added

Zoom

- Zoom Center & Corner shading indicator added
- Double-clicking the middle mouse button performs a Zoom Extent
- Undo includes the zoom state

Symbol Manufacturer Libraries

- Benito children's play sets added
- Osborne Wood Products pilasters, panels, corbels and brackets added
- Thermador refrigerators, coffee makers, cooktops, dishwashers, freezers, microwaves, ovens, ranges, range tops, ventilation,
- warming drawers, wine columns added
- True appliances added
- WindsorOne millwork added



Walls

- Board & Batton siding will fit to Soffit
- Corner Boards added to Board & Batten walls
- Drag & Drop sort added to Wall Definition dialog
- Draw Wall dialog stays on screen so different Wall Types can be selected without starting the command again
- Dialog width increased to display full name
- Drywall automatically caps the exposed end of an interior wall if displayed in plan
- Dynamic preview added when drawing or adjusting Walls
- Footings added separately to Visible Items
- Footing can be dimensioned
- Frieze Board placement on walls with small jogs improved
- Wall Insulation extracts in the model
- Glass Block wall added to Extended Wall List
- Log Wall joins improved
- Textures (plan) double-line and long short added
- Quoins run continuous from floor to floor on the 3D model
- Walls on the drawing are listed at the top of the Draw Wall dialog

Tools

- Adjust, dynamic preview added
- Extend acts on items within a Selection Set
- Trim - dynamic preview added